

MAGNETIC FILTER

Leaflet F-02-01-UK

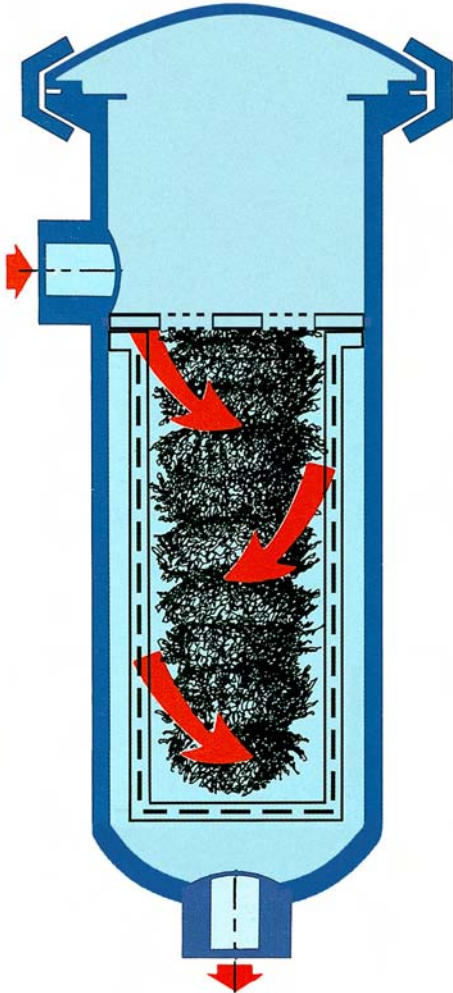


FLUXA

**Fluxa
Filtri
S.p.A.**

V.le A. De Gasperi, 88/B-20017 Mazzo di Rho (MI)
Tel. 0293959.1 (15 lines)
Fax 0293959.400-440-470
e-mail: info@fluxafiltri.com - www.fluxafiltri.com

Agent for South Italy:
Sire srl - Via Sannio, 9 - 80146 Napoli
Tel. 0817349254 – 0817349310
Fax 0817349317



The magnetic filters are fitted with vertically arranged filter candles consisting of powerful permanent magnets, with alternating positive and negative impulses.

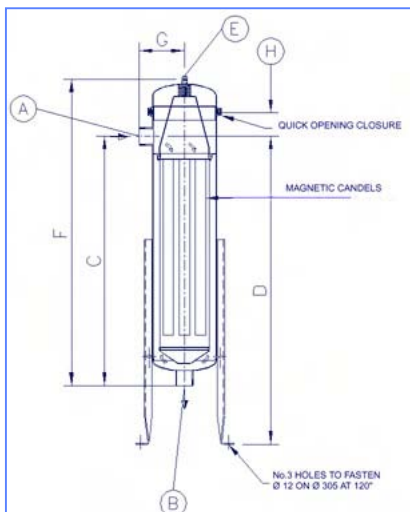
These magnets are housed in a grade 316L stainless steel sheath. The liquid or gas to be filtered is channelled in the optimum manner amongst the filter candles by means of a guide tube. Thus the "magnetic" contaminant particles to be removed are forced through several magnetic fields and, being "magnetised" are then retained by the filter candles. This result is particularly impressive in the case of "magnetic" sludges (particles from mechanical wear or oxides). The impulses create heavy particulate aggregates which adhere to the filter candles. Applying this technique it is possible to retain 99,99% of magnetic particles over 0.5 microns (depending on the velocity and viscosity of the liquid, without any increase in pressure drop or replacement of the filter element. However, a large amount of non-magnetic particles can be retained as they become trapped amongst the magnetic particles. A considerable weight of particles is retained-approximately 1.5 kg for each metre of filter candle.

Standard filters series M-C

The M-C Filters combine the filtration by filter bags or by filter baskets with the action of groups of magnetic candles lodged within the bags or baskets. Connections are 2" and 3", threaded or flanged. Filters can be supplied according to the requirement of client, following directives PED 97/23/EC, ASME VIII-Div.1, or special.

Typical uses:

- Natural gas, liquid gas, compressed air.
- Fuels, petrol, gas oil, fuel oil, jet fuel.
- Chemicals.
- Lube oils, hydraulic oils.
- Painting by dipping-cataphoresis
- Cleaning solutions.
- Industrial process waters.
- Waters of heating systems.
- Protection of maters.
- Pumps, lathes etc.



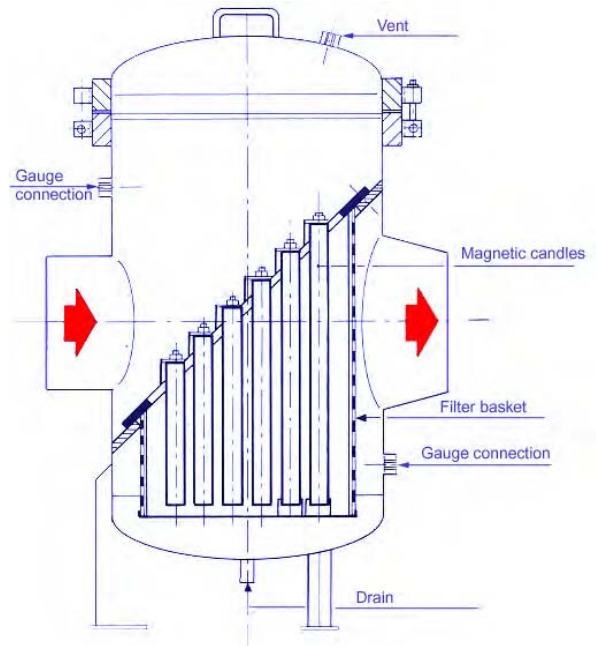
MODELS	Stainless Steel	
	FHSSC11...MG	FHSSC12... MG
Nominal flow rate m ³ /h *	20	30
Mex. working pressure	8 bar	8 bar
No of candles	4	4
Length of candles mm	300	600
Dimensions of basket Ø mm.	180	180
Length mm.	420	750
Threaded connections	2" GAS M	
Weight approx Kg.	26	31

* Flow rate without filter cartridges, with liquids of the viscosity of 1 cSt. The working flow rate of the filter must consider the filter cartridges and the process date

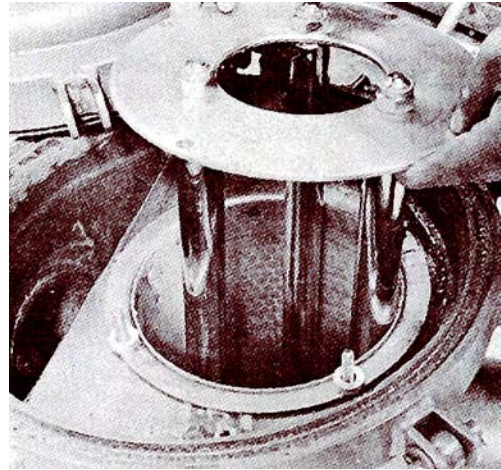
MODEL	MATERIAL	DIMENSIONS mm.							
		A-B	C	D	E	F	G	H	OD
FHSSC11... MG	AISI 304, AISI 316/L	Ø 2" GAS M	515	min. 750 max. 1025	Ø ¼" GAS F	700	160	450	219
FHSSC12... MG	AISI 304, AISI 316/L		855	min. 980 max. 1350		1040	160	750	219



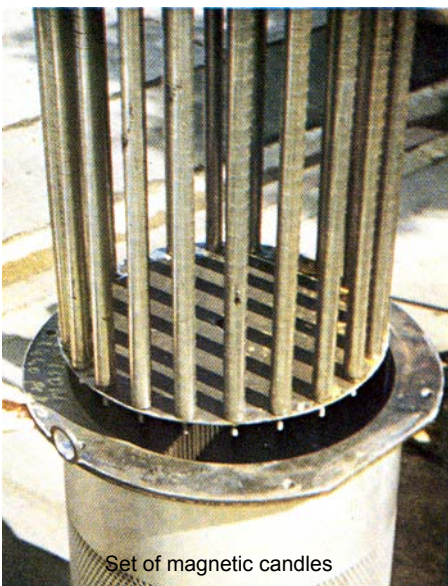
Magnetic filter



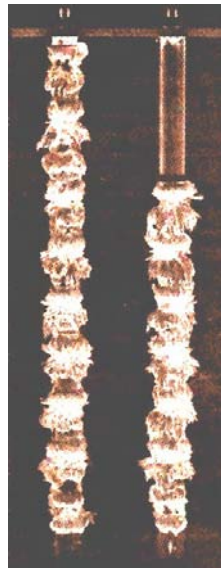
In-line basket filter series PBM



Magnetic filter with wire-mesh basket



Set of magnetic candles



Magnetic candles showing capture of iron particles



Loading inside the filter